



High quality rammers

The exceptional features of the PACLITE four-stroke CRX rammers are their compact design, low weight and high efficiency. The high and powerful percussion rate and their fast speed of movement provides excellent results. The four-stroke gasoline engine Honda GX100 provides endurance and long lasting work.

A unique three stage air filtration system allows a virtually dust-free motor for longer service life.

The system includes quality filters that protect the engine when servicing.

The rammer foot is manufactured by hand using heat laminated wood and steel to provide flexibility and endurance on any type of soil.



Code Model	CRX60H CRX60 Honda	CRX68H CRX68 Honda
Operating mass (kg)	60	71
Centrifugal force (kN)	18,6	18,6
Plate width (mm)	335-285	335-285
Engine	Honda GX100	Honda GX100
Power hp (kW)	3,0 (2,21)	3,0 (2,21)
Speed (m/min)	8 - 11	8 - 11
Amplitude (mm)	70 - 80	70 - 80
Frequency (Hz)	12	12
Sound pressure level dB (A)	91	91
Vibration emission value (m/s²)*	6,4	6,5

* Minimum vibration levels measured to EN500-4

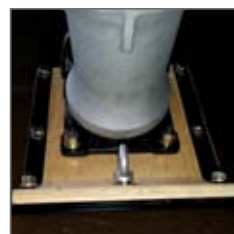
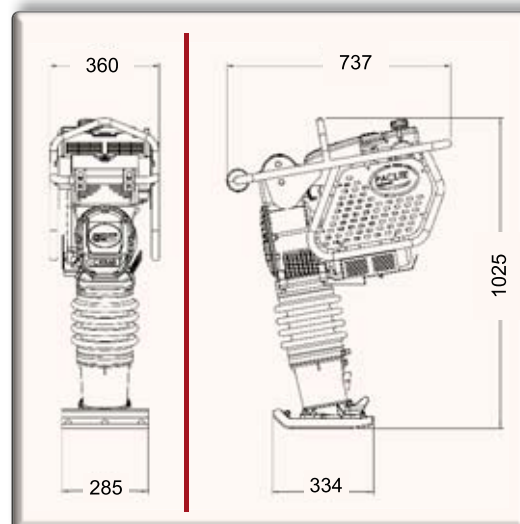
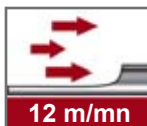


Wheel kit OPTION	
Code	OP/TR-WHEEL



Features and benefits

- Engine Protection system (EPS).
- Triple air filtration system with cyclone prefilter: high filter capacity thanks to premium quality.
- Easy access to servicing points.
- Automatic oil level.
- Low vibrating handle.
- Protective cover with 'tachymeter', measuring the speed and duration of work.
- Strong lifting eye.
- Pull wheels mounted on frame for easy loading.
- Engine shut-off integrated in the throttle.
- Narrow frame 380 mm.
- Bellow of German fabrication.
- Engine Honda GX100.



Heat laminated hand made wooden foot



Tachymeter



Engine shut-down on handle



HONDA